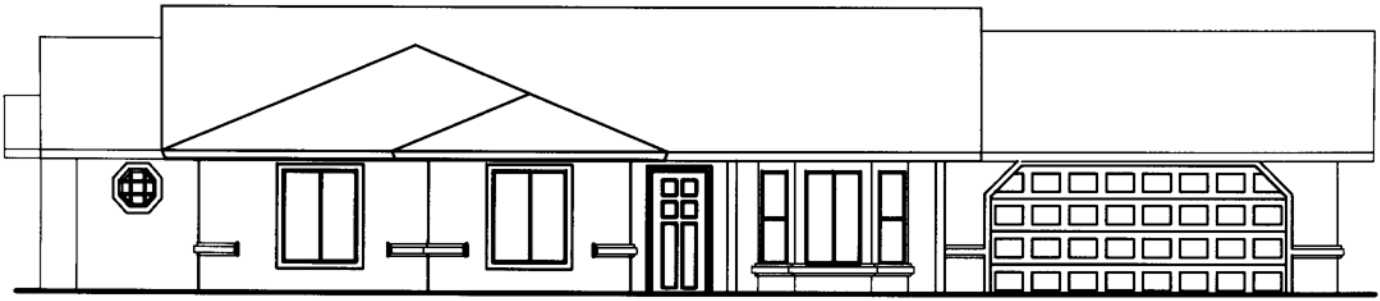


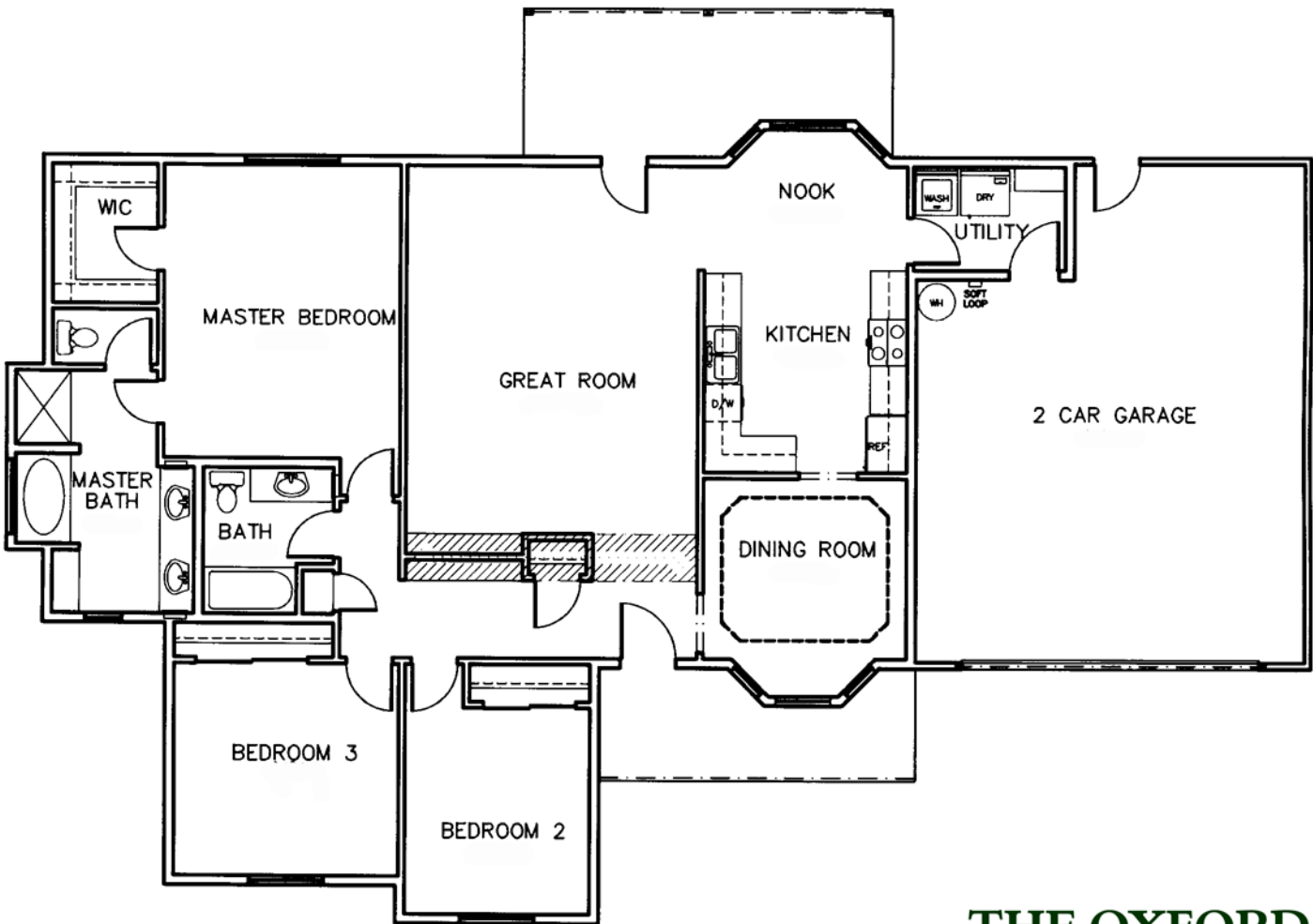


CLASSIC REALTY



Front Elevation

(Optional Patio)



Built By:



License # 48608-A

THE OXFORD
1683 SQ. FT.
3 BEDROOM
2 BATHROOM
2 CAR GARAGE

Office (775) 751-1800 • Toll Free (866) 326-1800 • Fax (775) 751-1889

2250 Postal Drive • Suite 1 • Pahrump, Nevada 89048

www.classicrealtynv.com

